

# MORWENSTOW PARISH COUNCIL



## ENVIRONMENTAL POLICY

Adopted at Full Council on: 15/03/2023

Minute Reference: 15.03.23/12

Policy Reviewed on: ~~20th March 2024~~

19<sup>th</sup> March 2025

## 1. INTRODUCTION

1.1 Morwenstow Parish Council recognises that a healthy environment is fundamental to the prosperity and wellbeing of our local community. The Council acknowledges that whilst our activities may have adverse effects on the environment, we can take steps to minimise those impacts.

1.2 The Council considers that the environment is important and will comply with and, where possible, exceed all environmental regulations, laws and codes of practice, as applicable.

1.3 The Council will make a positive contribution to environmental growth by protecting and enhancing the local and global environment.

## 2. AIMS OF POLICY

The aims of the Morwenstow Parish Council Environmental Policy are:

- To increase environmental growth across Parish responsibilities and assets for the benefit of the local community.
- To promote the importance and value of a quality environment, and to support local people in their enjoyment of it.
- To carry out our work in an efficient way that minimises or eliminates its adverse impact on our environment.
- To promote the development of a Circular Economy

### 3. LIST OF POLICIES

#### i. CLIMATE CHANGE

*The Council understands the effects of climate change are potentially damaging to the local community and commits to minimising its own impact by undertaking measures which include:*

- Invest in electric car charging points
- Introduce natural climate change solutions (such as tree planting and rewilding) on Council assets
- Encourage the use of renewable energy when determining planning consultations.

#### ii. NATURE & WILDLIFE

The Parish Council is committed to increasing opportunities for nature to thrive on the assets it owns or manages. Environmental growth will be achieved by:

- Protecting and enhancing the quality and extent of the natural environment in Morwenstow
- Supporting the conservation of trees, hedgerows, ponds, streams and coastal habitats
- Managing Council assets (including public rights of way, coastal areas, play areas, playing fields, and verges) in a manner that protects and increases biodiversity
- Banning the release of balloon/sky lantern from Council land and events

#### iii. SUSTAINABLE TRAVEL

The Parish Council will:

- Promote and support the use of cycling, public footpaths and public transport
- Promote use of electric powered vehicles by installing electric vehicle charging

#### iv. WATER MANAGEMENT

The Parish Council is committed to responsible water management and conservation throughout its operations, which include:

- Encouraging the utilisation of water butts as a non-drinking water source
- Promoting and supporting natural solutions to reduce/reuse surface water run-off in the Town/Parish

#### v. WASTE & RECYCLING

The Parish Council will:

- Cease use of single-use plastics at Council events
- Promote and encourage recycling across the Parish
- Minimise the amount of printing and minimise the amount of waste paper
- Utilise electronic communications; councillors to use an opt-in scheme for printing paper documents

#### vi. DEVELOPMENT

The Parish Council will:

- Support planning applications where the applicant can demonstrate biodiversity net gain
- Be mindful of Policy Statements set out in Cornwall's Shoreline Management Plan 2 (SMP2) (*for coastal authorities*)

#### vii. RESPONSIBLE & SUSTAINABLE PROCUREMENT

The Parish Council will:

- Source materials and services locally so long as the requirements for value for money and quality are met
- Ensure that procurement of goods and services are weighted appropriately to encourage local suppliers thereby promoting the Circular Economy

## viii. AWARENESS, LOBBYING &amp; PARTNERSHIPS

The Parish Council will:

- Promote awareness of, and information about, environmental issues within the community
- Support, and act as a voice for, local environmental concerns within the community
- Ensure that all individuals involved in the organisation (including contractors) are aware of their responsibilities in implementing this environmental policy
- Work with partners, where appropriate, to increase environmental growth within the Parish

## ix. ENERGY USE

The Parish Council will:

- Promote use of renewable energy in the Parish
- 

## x. CIRCULAR ECONOMY

The Parish Council will:

- Promote and encourage the use of local suppliers in procurement policies
- 

## 4. REVIEW

This policy and its application will be subject to annual review to ensure that it continues to reflect the aims and objectives of Morwenstow Parish Council and promotes continuous environmental improvement throughout the Council's operations.

## Section 3 – Supplementary information



### CLIMATE

---

In response to declaring a climate emergency, Cornwall Council has produced its **Climate Change Action Plan**, found here;

<https://www.cornwall.gov.uk/media/40176082/climate-change-action-plan.pdf>

For an excellent example of an adopted **local climate action plan**, see Helston's here;

<https://www.cornwall.gov.uk/media/41106932/helston-climate-action-plan-september-2019.pdf>

For a short video about **nature climate solutions**;

[https://www.youtube.com/watch?v=J9mjbzqqA\\_M&feature=emb\\_title](https://www.youtube.com/watch?v=J9mjbzqqA_M&feature=emb_title)

To find out about Forest for Cornwall (F4C) **funding for support community-based projects** that help to increase the tree canopy cover in Cornwall, see;

<https://www.crowdfunder.co.uk/funds/forest-for-cornwall>

For information about undertaking a **carbon footprint calculation**, see;

<https://www.carbontrust.com/resources/carbon-footprinting-guide>



### NATURE & WILDLIFE

---

Cornwall Council's Grow Nature Toolkit has a specific area for **T&PCs wanting to know more about environmental growth** – find out more here;

<https://www.cornwall.gov.uk/environment-and-planning/grow-nature/get-involved/town-and-parish-councils/>

For simple ideas about **how your local council can do more for nature**, follow the link below to the 'St. Piran virtual map';

<https://www.cornwall.gov.uk/media/40529159/environmental-growth-ideas-for-parishes.pdf>

For information about **funding for local nature projects**, see;

<https://www.cornwall.gov.uk/environment-and-planning/grow-nature/funding/>



## PESTICIDE USE

---

Cornwall Council's Grow Nature toolkit has **an area dedicated to helping T&PCs go pesticide free** here;

<https://www.cornwall.gov.uk/environment-and-planning/grow-nature/about/alternatives-to-pesticides/>

For step-by-step **guidance for local authorities looking to go pesticide-free** see;

[https://issuu.com/pan-uk/docs/pft\\_a\\_toolkit\\_for\\_local\\_authorities?e=28041656/43992989](https://issuu.com/pan-uk/docs/pft_a_toolkit_for_local_authorities?e=28041656/43992989)



## SUSTAINABLE TRAVEL

---

For a charity's perspective about **supporting car-free travel**;

<https://www.sustrans.org.uk/>



## WATER MANAGEMENT

---

South West Water runs several **campaigns to use reduce water loss, increase efficiency and protect Cornwall's rivers and seas**. You could use their 'Top Tips', 'Think-sink' and 'Love your loo' resources to educate staff and local users;

<https://www.southwestwater.co.uk/save-water/top-tips/>

<https://www.southwestwater.co.uk/advice-and-services/your-wastewater/think-sink>

<https://www.southwestwater.co.uk/advice-and-services/your-wastewater/love-your-loo>



## WASTE & RECYCLING

---

Materials such as paper, cardboard, furniture, household metals and plastics, glass, electrical equipment, batteries, aerosols, green waste are collected by recycling services in Cornwall. **Household recyclate** is collected as part of Cornwall Council's domestic recycling service – your residents can find out more, including what can (and can't) be recycled here;

<https://www.cornwall.gov.uk/environment-and-planning/recycling-rubbish-and-waste/>

<https://www.cornwall.gov.uk/environment-and-planning/recycling-rubbish-and-waste/recycling-collections/find-out-what-goes-in-each-container/>

<https://www.cornwall.gov.uk/media/28556127/plastics-recycling-poster-web.pdf>

**Some wastes which aren't collected by the kerbside scheme can still be recycled** at retail outlets, recycling banks and at Household Waste Recycling Centres (HWRC), see; <https://www.cornwall.gov.uk/environment-and-planning/recycling-rubbish-and-waste/household-waste-and-recycling-centres/>

However, **waste and recyclate generated by T&PCs will be collected by licensed commercial waste companies**. The range of items recycled, and where they end up, depends on the service offered by your individual provider; <https://www.cornwall.gov.uk/environment-and-planning/recycling-rubbish-and-waste/commercial-waste/>



## DEVELOPMENT

---

For more information about **biodiversity net gain** in Cornwall see; <https://www.cornwall.gov.uk/environment-and-planning/planning/planning-policy/adopted-plans/planning-policy-guidance/biodiversity-net-gain/>

**Cornwall's Shoreline Management Plan (SMP2)** is here; <https://www.cornwall.gov.uk/environment-and-planning/countryside/estuaries-rivers-and-wetlands/flood-risk/coastal-erosion-and-shoreline-management/shoreline-management-plans/shoreline-management-plan-2011-smp2/SMP2>



## RESPONSIBLE & SUSTAINABLE PROCUREMENT

---

For some **key questions on sustainable procurement** see; <https://atwork.wwf.ca/five-sustainability-questions-for-procurement-professionals/>



## ENERGY USE

---

For tips about how to **reduce energy use and switching suppliers**, see; <https://friendsoftheearth.uk/climate-change/switching-green-energy-cheaper>  
<https://inews.co.uk/news/environment/how-to-reduce-your-energy-consumption-50-simple-ways-to-cut-bills-and-reduce-emissions-264785>



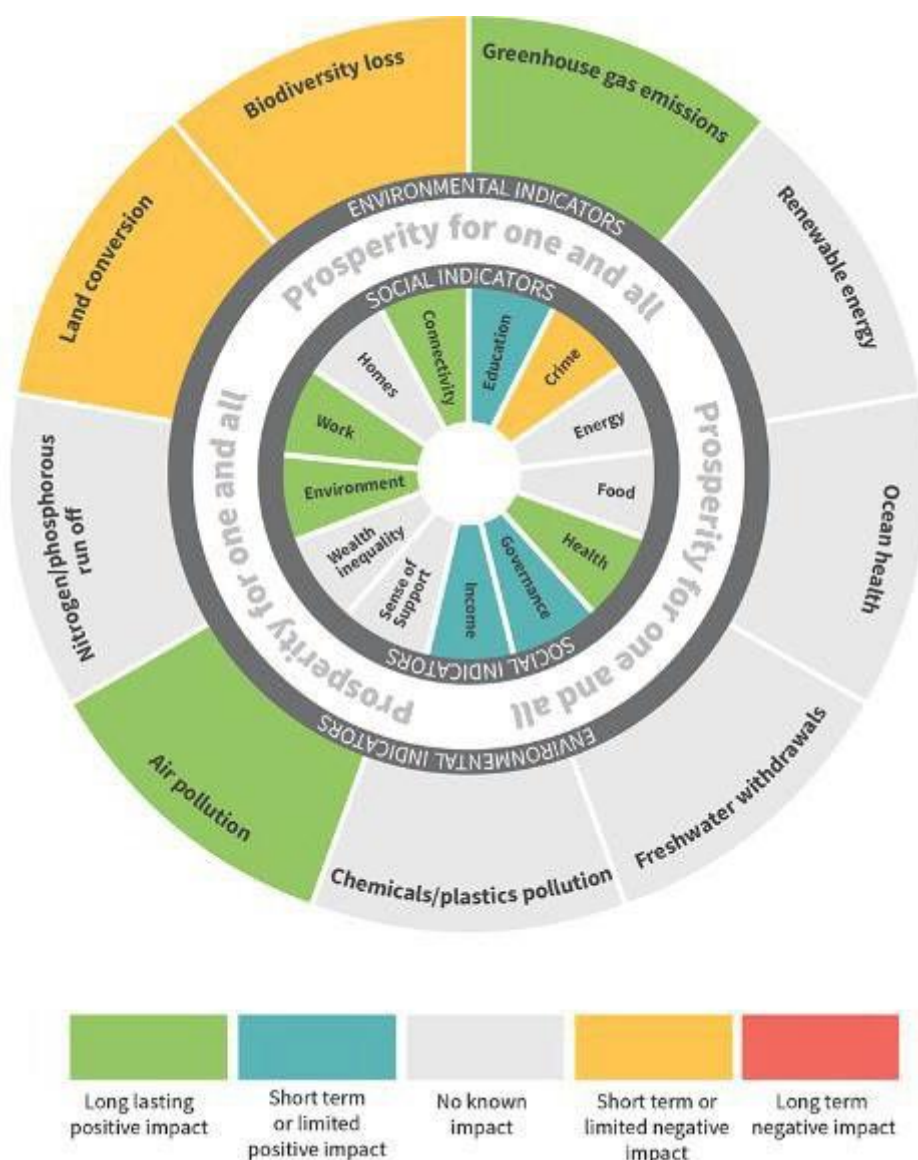
## CIRCULAR ECONOMY

---

For an introduction to the **circular economy** see; <http://www.wrap.org.uk/about-us/about/wrap-and-circular-economy>

## \*EMBEDDING ENVIRONMENTAL DECISION-MAKING INTO COUNCIL OPERATIONS

A new tool, based on the [Kate Raworth Doughnut Economics model](#), can help local authorities with decision-making. The wheel below, which is used by Cornwall Council's cabinet, helps to show how projects and decisions affect the environment and people. For further information, follow this [link](#).



**For any queries relating to environmental growth, please contact Cornwall Council's Environmental Growth Team at [grow-nature@cornwall.gov.uk](mailto:grow-nature@cornwall.gov.uk)**